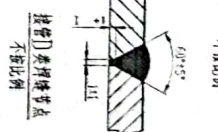


A, B 类焊缝节点
不加比例



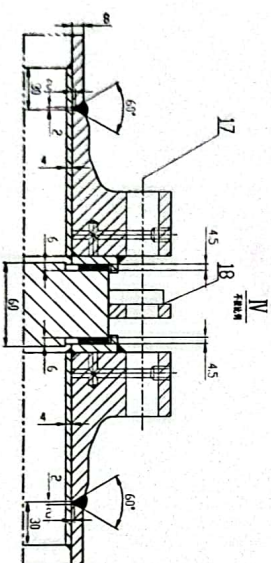
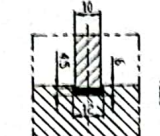
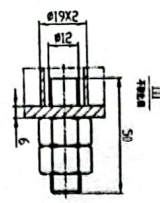
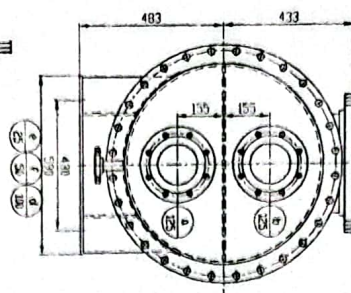
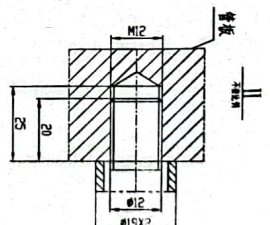
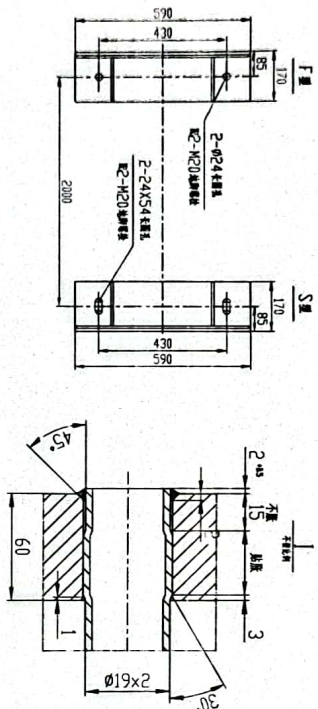
不按比例

[illegible]

二、疑難問題					
資料名稱	來源	格式	資料年份	資料類型	資料用途
國家統計局	統計局	統計表	1977/11.31-2002.3	國家統計	
統計局	統計局	統計表	1977/12.26-2003.3	國家統計	
統計局	統計局	統計表	1977/12.26-2003.3	國家統計	
統計局	統計局	統計表	1977/12.26-2003.3	國家統計	
統計局	統計局	統計表	1977/12.26-2003.3	國家統計	

[illegible]

1. BRONKHIAE 170266-1702640/5-2671462, SPERMATODID. 1702641-1702642.
2. STADIUM 1702643-1702644, LABRUM 1702645-1702646, ORBITA 1702647.
3. LABRUM 1702647-1702648, ORBITA 1702649.
4. ANTHROPOMORPHIC 1702649-1702650, LABRUM 1702651-1702652, ORBITA 1702653.
5. LABRUM 1702653-1702654, ORBITA 1702655-1702656, LABRUM 1702657-1702658, ORBITA 1702659.
6. LABRUM 1702659-1702660.



新流板布置示意图

Run	Sample	Time (min)	Temp (°C)	Flow (mL/min)	Pressure (bar)	Detector	Response	Area	Height	Width	Volume
0	MA10101-000	10	100	0.5	1.0	1.0	1.0	1.0	1.0	1.0	1.0
1	MA10101-001	10	100	0.5	1.0	1.0	1.0	1.0	1.0	1.0	1.0
2	MA10101-002	10	100	0.5	1.0	1.0	1.0	1.0	1.0	1.0	1.0
3	MA10101-003	10	100	0.5	1.0	1.0	1.0	1.0	1.0	1.0	1.0
4	MA10101-004	10	100	0.5	1.0	1.0	1.0	1.0	1.0	1.0	1.0
5	MA10101-005	10	100	0.5	1.0	1.0	1.0	1.0	1.0	1.0	1.0
6	MA10101-006	10	100	0.5	1.0	1.0	1.0	1.0	1.0	1.0	1.0
7	MA10101-007	10	100	0.5	1.0	1.0	1.0	1.0	1.0	1.0	1.0
8	MA10101-008	10	100	0.5	1.0	1.0	1.0	1.0	1.0	1.0	1.0
9	MA10101-009	10	100	0.5	1.0	1.0	1.0	1.0	1.0	1.0	1.0
10	MA10101-010	10	100	0.5	1.0	1.0	1.0	1.0	1.0	1.0	1.0
11	MA10101-011	10	100	0.5	1.0	1.0	1.0	1.0	1.0	1.0	1.0
12	MA10101-012	10	100	0.5	1.0	1.0	1.0	1.0	1.0	1.0	1.0
13	MA10101-013	10	100	0.5	1.0	1.0	1.0	1.0	1.0	1.0	1.0
14	MA10101-014	10	100	0.5	1.0	1.0	1.0	1.0	1.0	1.0	1.0
15	MA10101-015	10	100	0.5	1.0	1.0	1.0	1.0	1.0	1.0	1.0
16	MA10101-016	10	100	0.5	1.0	1.0	1.0	1.0	1.0	1.0	1.0
17	MA10101-017	10	100	0.5	1.0	1.0	1.0	1.0	1.0	1.0	1.0
18	MA10101-018	10	100	0.5	1.0	1.0	1.0	1.0	1.0	1.0	1.0
19	MA10101-019	10	100	0.5	1.0	1.0	1.0	1.0	1.0	1.0	1.0
20	MA10101-020	10	100	0.5	1.0	1.0	1.0	1.0	1.0	1.0	1.0
21	MA10101-021	10	100	0.5	1.0	1.0	1.0	1.0	1.0	1.0	1.0
22	MA10101-022	10	100	0.5	1.0	1.0	1.0	1.0	1.0	1.0	1.0
23	MA10101-023	10	100	0.5	1.0	1.0	1.0	1.0	1.0	1.0	1.0
24	MA10101-024	10	100	0.5	1.0	1.0	1.0	1.0	1.0	1.0	1.0
25	MA10101-025	10	100	0.5	1.0	1.0	1.0	1.0	1.0	1.0	1.0
26	MA10101-026	10	100	0.5	1.0	1.0	1.0	1.0	1.0	1.0	1.0
27	MA10101-027	10	100	0.5	1.0	1.0	1.0	1.0	1.0	1.0	1.0
28	MA10101-028	10	100	0.5	1.0	1.0	1.0	1.0	1.0	1.0	1.0
29	MA10101-029	10	100	0.5	1.0	1.0	1.0	1.0	1.0	1.0	1.0
30	MA10101-030	10	100	0.5	1.0	1.0	1.0	1.0	1.0	1.0	1.0
31	MA10101-031	10	100	0.5	1.0	1.0	1.0	1.0	1.0	1.0	1.0
32	MA10101-032	10	100	0.5	1.0	1.0	1.0	1.0	1.0	1.0	1.0
33	MA10101-033	10	100	0.5	1.0	1.0	1.0	1.0	1.0	1.0	1.0
34	MA10101-034	10	100	0.5	1.0	1.0	1.0	1.0	1.0	1.0	1.0
35	MA10101-035	10	100	0.5	1.0	1.0	1.0	1.0	1.0	1.0	1.0
36	MA10101-036	10	100	0.5	1.0	1.0	1.0	1.0	1.0	1.0	1.0
37	MA10101-037	10	100	0.5	1.0	1.0	1.0	1.0	1.0	1.0	1.0
38	MA10101-038	10	100	0.5	1.0	1.0	1.0	1.0	1.0	1.0	1.0
39	MA10101-039	10	100	0.5	1.0	1.0	1.0	1.0	1.0	1.0	1.0
40	MA10101-040	10	100	0.5	1.0	1.0	1.0	1.0	1.0	1.0	1.0
41	MA10101-041	10	100	0.5	1.0	1.0	1.0	1.0	1.0	1.0	1.0
42	MA10101-042	10	100	0.5	1.0	1.0	1.0	1.0	1.0	1.0	1.0
43	MA10101-043	10	100	0.5	1.0	1.0	1.0	1.0	1.0	1.0	1.0
44	MA10101-044	10	100	0.5	1.0	1.0	1.0	1.0	1.0	1.0	1.0
45	MA10101-045	10	100	0.5	1.0	1.0	1.0	1.0	1.0	1.0	1.0
46	MA10101-046	10	100	0.5	1.0	1.0	1.0	1.0	1.0	1.0	1.0
47	MA10101-047	10	100	0.5	1.0	1.0	1.0	1.0	1.0	1.0	1.0
48	MA10101-048	10	100	0.5	1.0	1.0	1.0	1.0	1.0	1.0	1.0
49	MA10101-049	10	100	0.5	1.0	1.0	1.0	1.0	1.0	1.0	1.0
50	MA10101-050	10	100	0.5	1.0	1.0	1.0	1.0	1.0	1.0	1.0

[illegible][illegible]